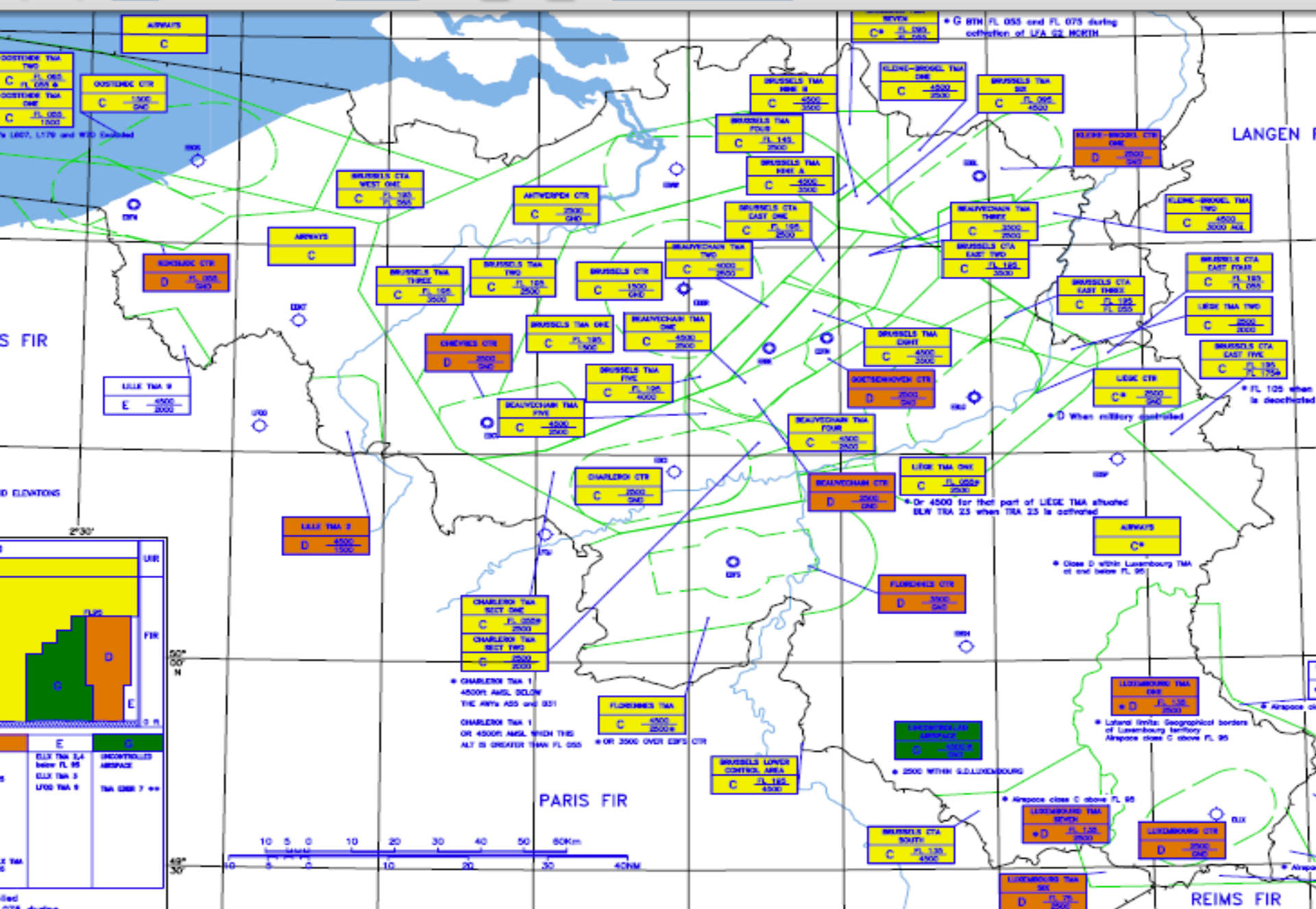




Routing and altitude of Military Aircrafts

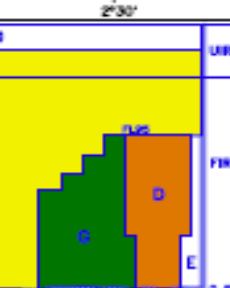
Airspace classification within Brussels FIR



EASTERN TMA TWO
C FL 050
FL 050-5
EASTERN TMA ONE
C FL 050
FL 050-1000
N 1607, L179 and W20 Excluded

S FIR

D ELWANTS



E EILK TMA 1-4
below FL 95
EILK TMA 2
LF05 TMA 6
TMA 6-7**

AIRWAYS
C

NORDRE CTR
D FL 200
2400

AIRWAYS
C

BRUSSELS TMA THREE
C FL 120
2500

BRUSSELS TMA TWO
C FL 120
2500

AIRWAYS
C

BRUSSELS TMA ONE
C FL 120
2500

BRUSSELS TMA FOUR
C FL 140
2900

BRUSSELS TMA SIX
C FL 095
4000

BRUSSELS TMA SEVEN
D FL 095
2000

BRUSSELS TMA EIGHT
C FL 095
2000

BRUSSELS TMA NINE
C FL 095
2000

BRUSSELS TMA ONE
C FL 120
2500

BRUSSELS TMA TWO
C FL 120
2500

BRUSSELS TMA THREE
C FL 120
2500

BRUSSELS TMA FOUR
C FL 140
2900

BRUSSELS TMA FIVE
C FL 120
2500

BRUSSELS TMA SIX
C FL 120
2500

BRUSSELS TMA SEVEN
D FL 095
2000

CHARLOI CTR
C FL 200
2400

BEAUVECHEN CTR
D FL 200
2400

LIÈGE CTR
C* FL 200
2400

EILK TMA 1
D FL 200
2400

CHARLOI TMA WEST ONE
C FL 200
2400

CHARLOI TMA WEST TWO
C FL 200
2400

FLORENNES TMA
C FL 200
2400

FLORENNES CTR
D FL 200
2400

LUXEMBOURG TMA ONE
D FL 200
2400

LUXEMBOURG TMA TWO
D FL 200
2400

LUXEMBOURG CTR
D FL 200
2400

* CHARLOI TMA 1
4500ft AMSL BELOW
THE ARTA ASS and 931
CHARLOI TMA 1
OR 4500ft AMSL WITH THE
ALT IS GREATER THAN FL 050

* OR 3500 OVER EFIS CTR

PARIS FIR

BRUSSELS LOWER CONTROL AREA
C FL 120
4500

BRUSSELS CTR SOUTH
C FL 120
2500

LUXEMBOURG TMA SOUTH
D FL 120
2500

LUXEMBOURG TMA NORTH
D FL 120
2500

LUXEMBOURG CTR SOUTH
D FL 200
2400



LANGEN FIR

* FL 105 when
is declassified

* D when military controlled

* Or 4500 for that part of LIEGE TMA situated
BLW TRA 25 when TRA 25 is activated

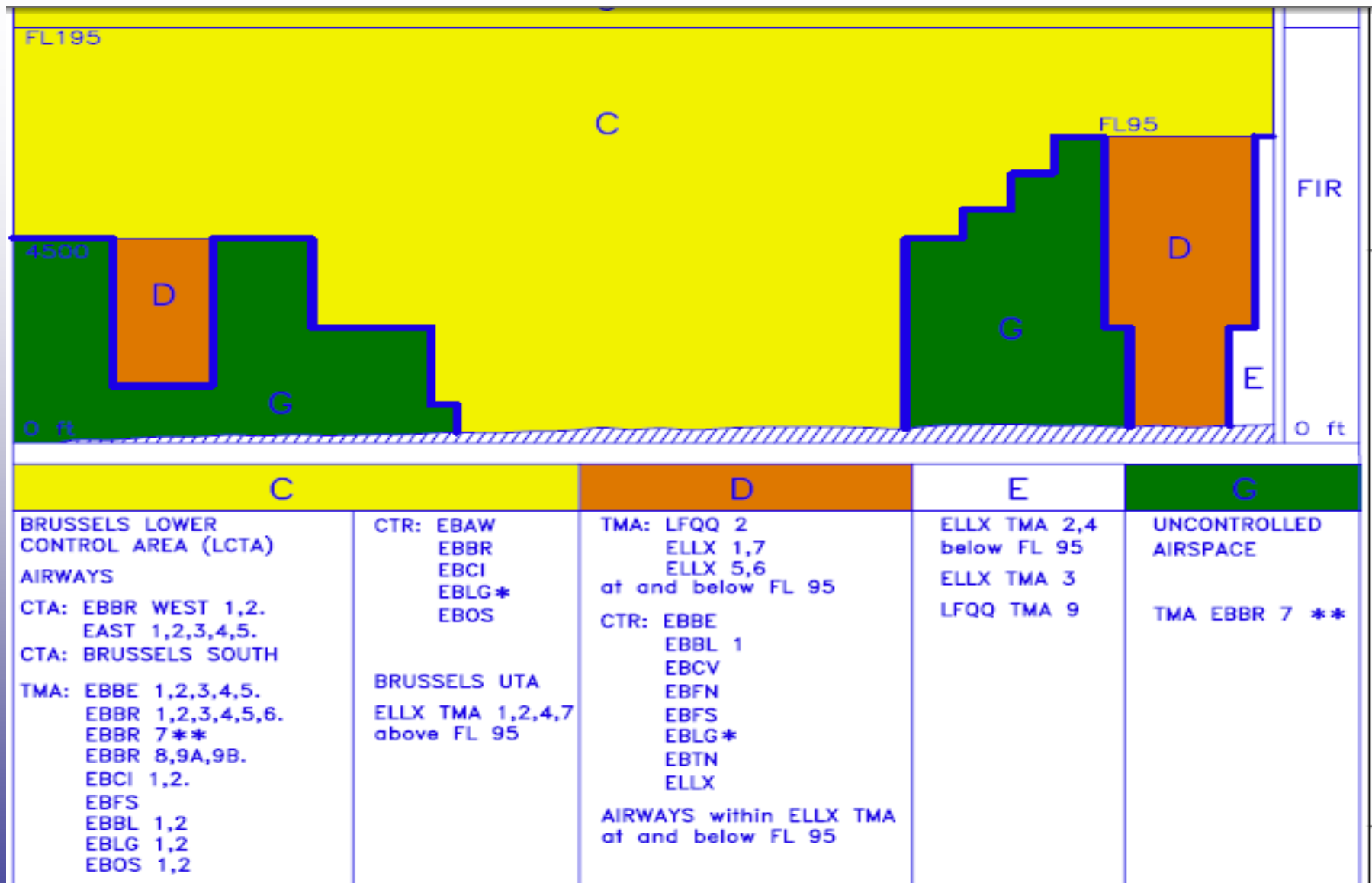
* Close D within Luxembourg TMA
at and below FL 95

* Lateral limits: Geographical borders of
Luxembourg territory
Airspace class C above FL 95

* 2500 WITHIN G.LUXEMBOURG

* Airspace class C above FL 95

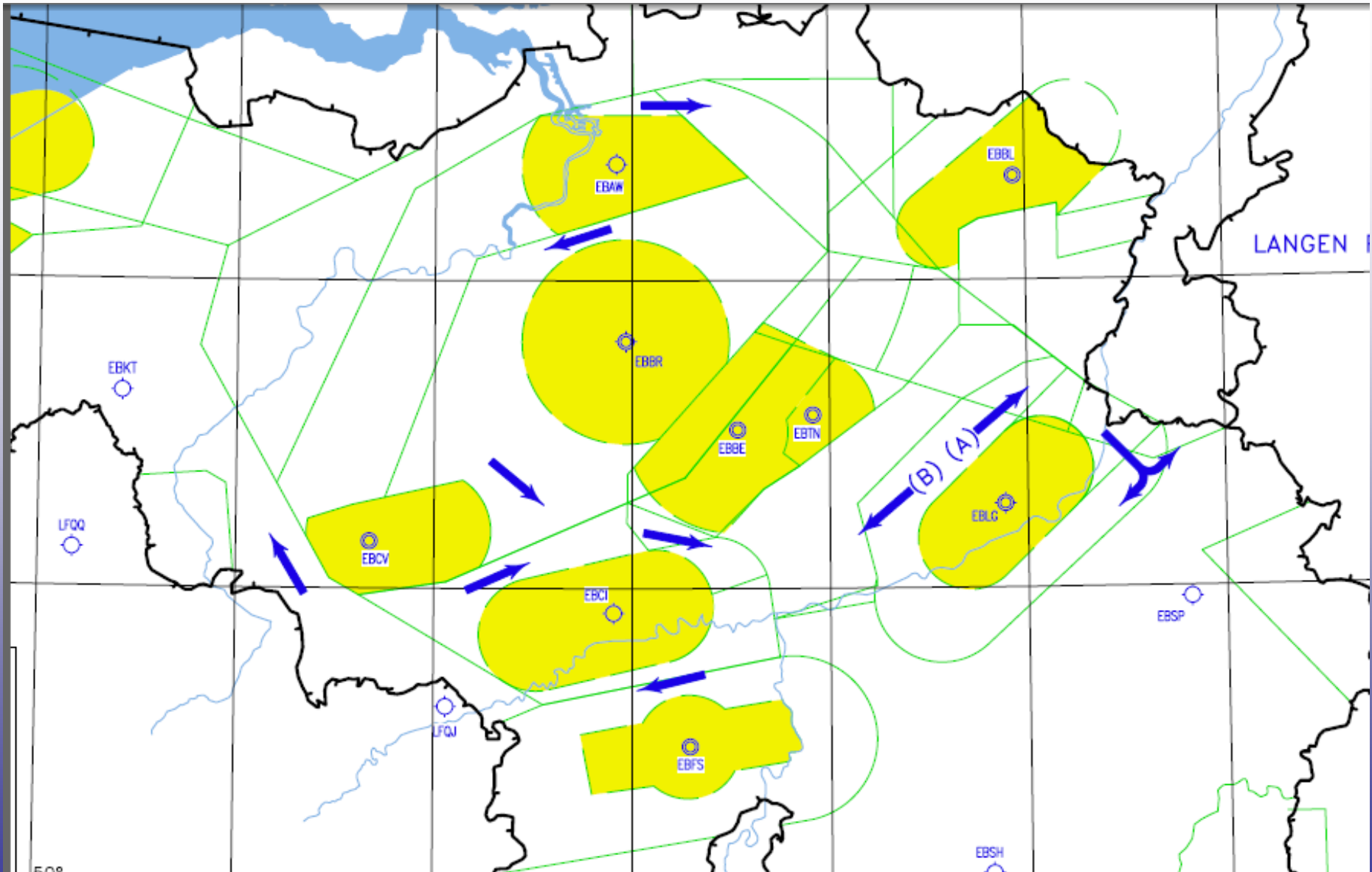
REIMS FIR



* D When military controlled

** G BTN FL 055 and FL 075 during activation of LFA G2 NORTH

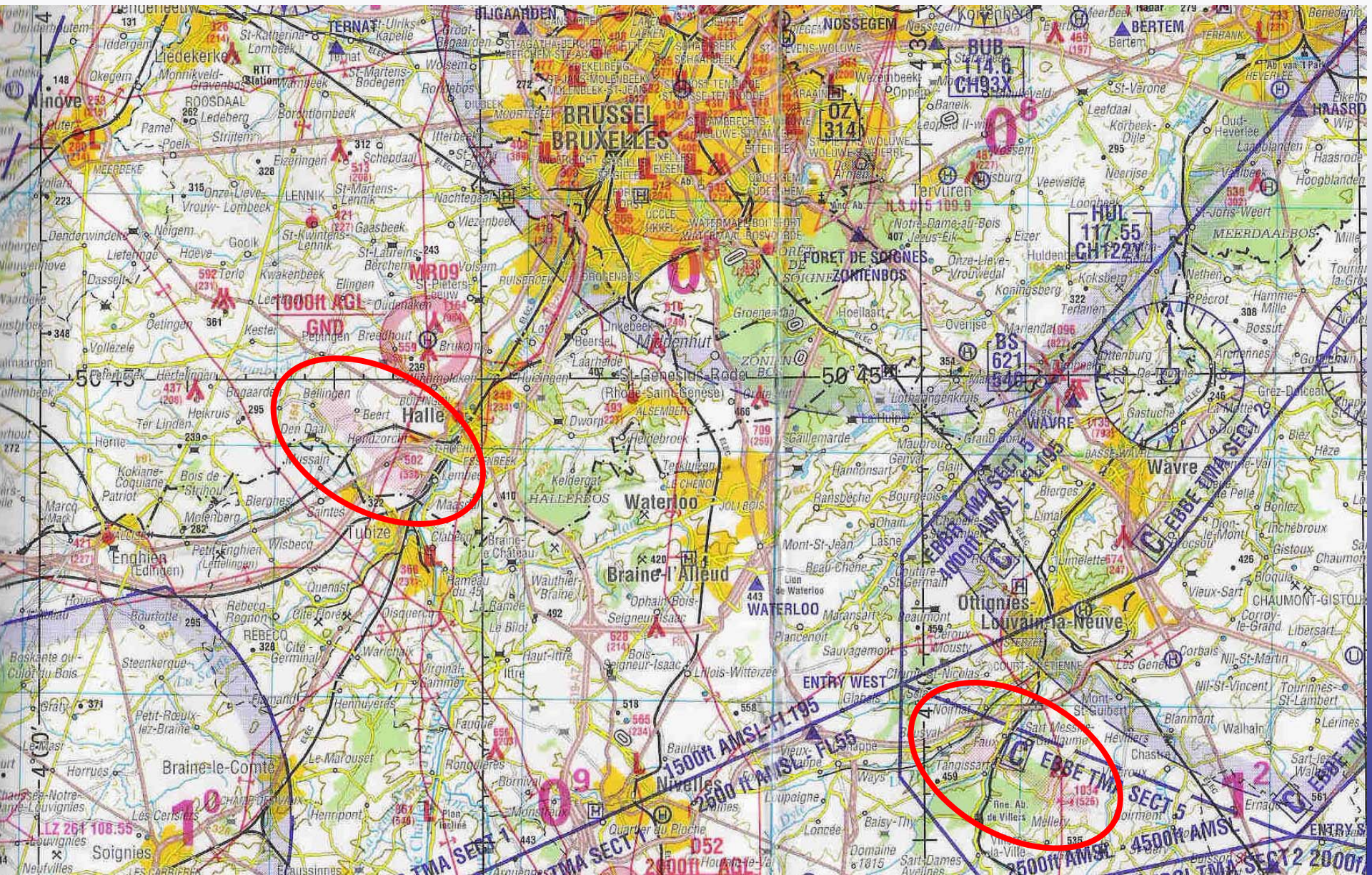
Military Jet VFR flights below 4.500



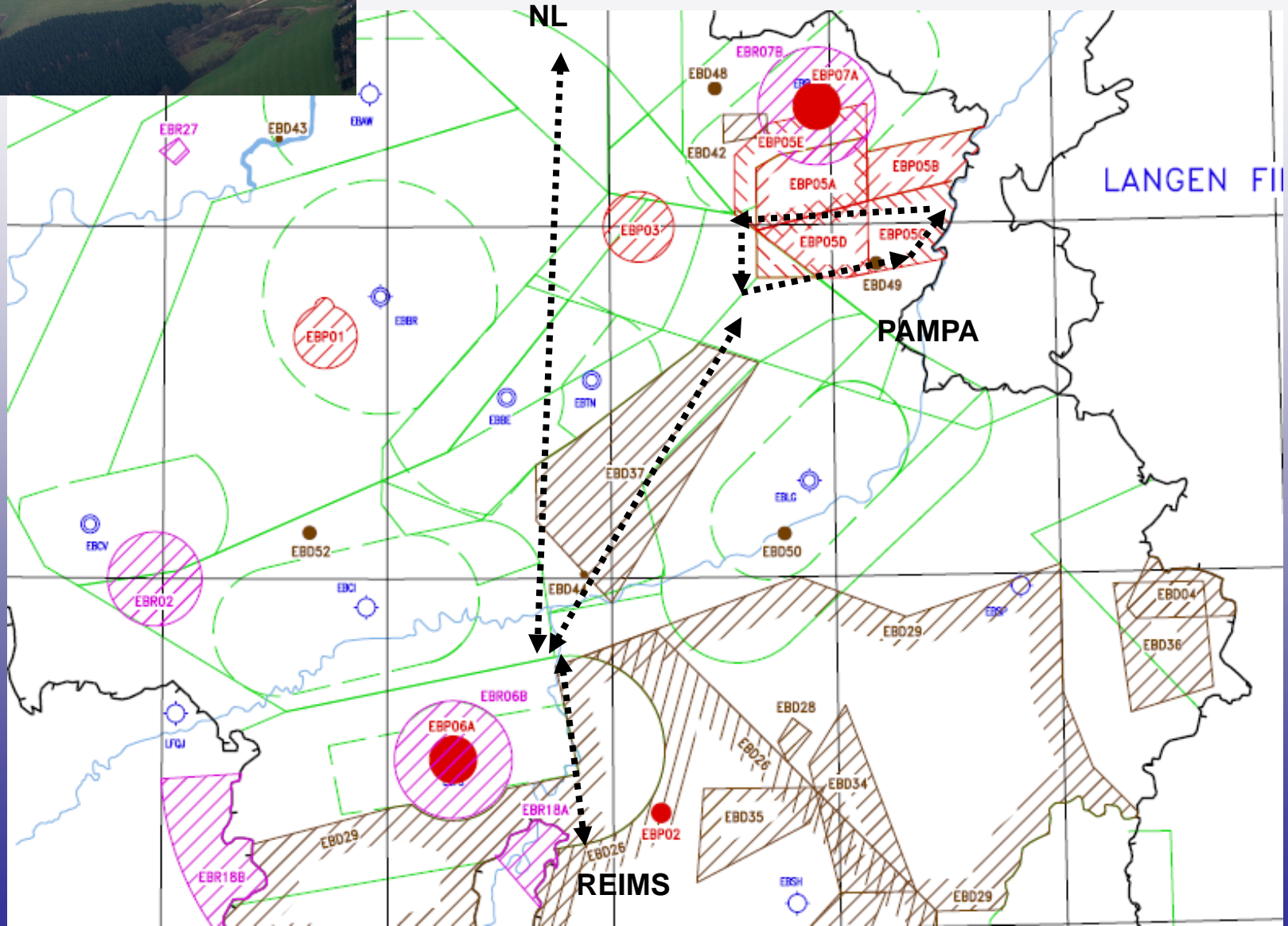
(A) = 1000 AMSL (B) = 1500 AMSL

Ref: Enr 6

Arrows on the Map



Jet flights to firing ranges



Marchetti Navigations





Be **professional** while you practise your **hobby** during your **leisure** time



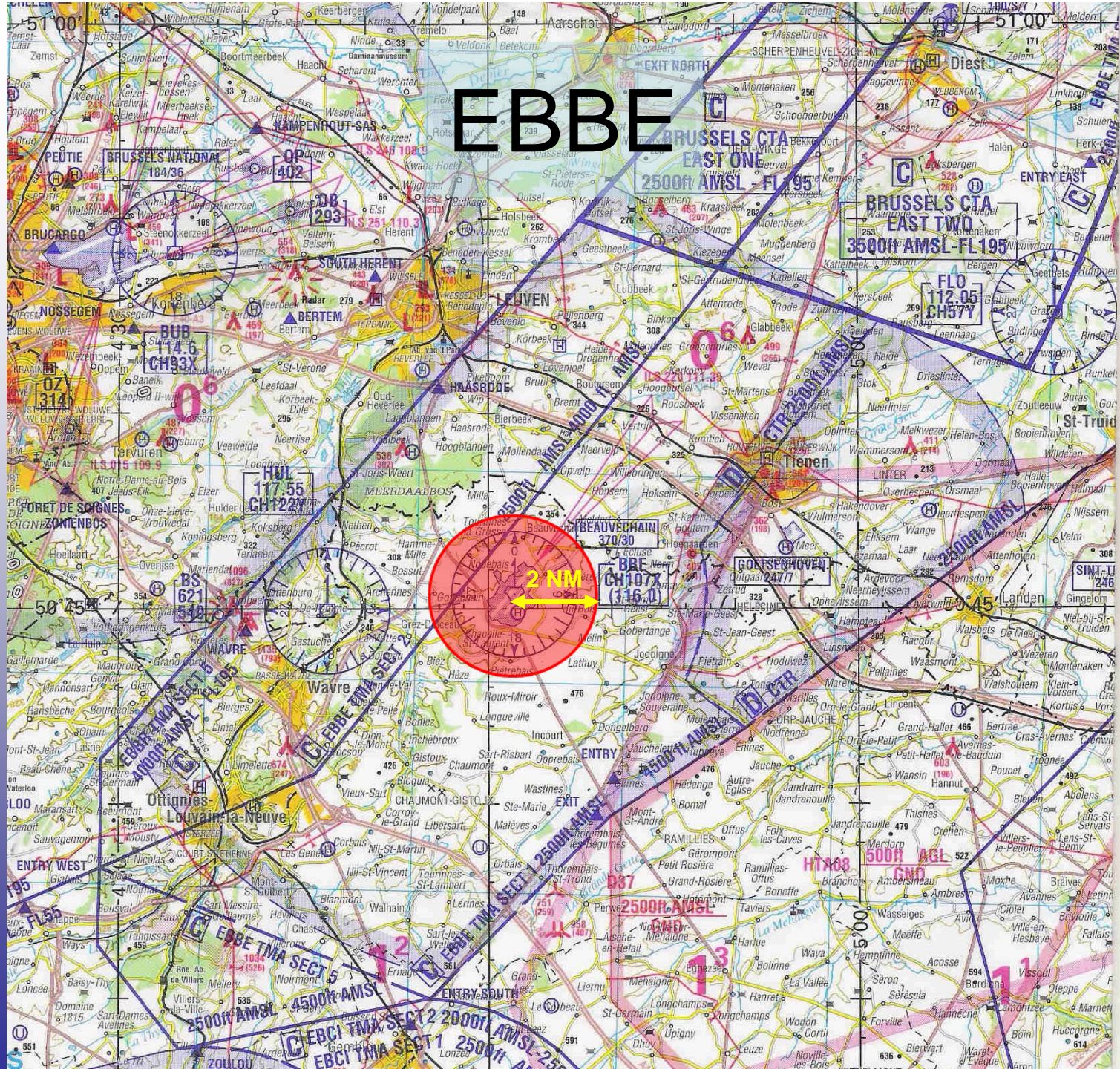
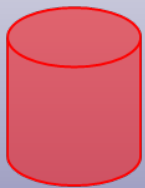
DANGER

**MOVING
MACHINES**



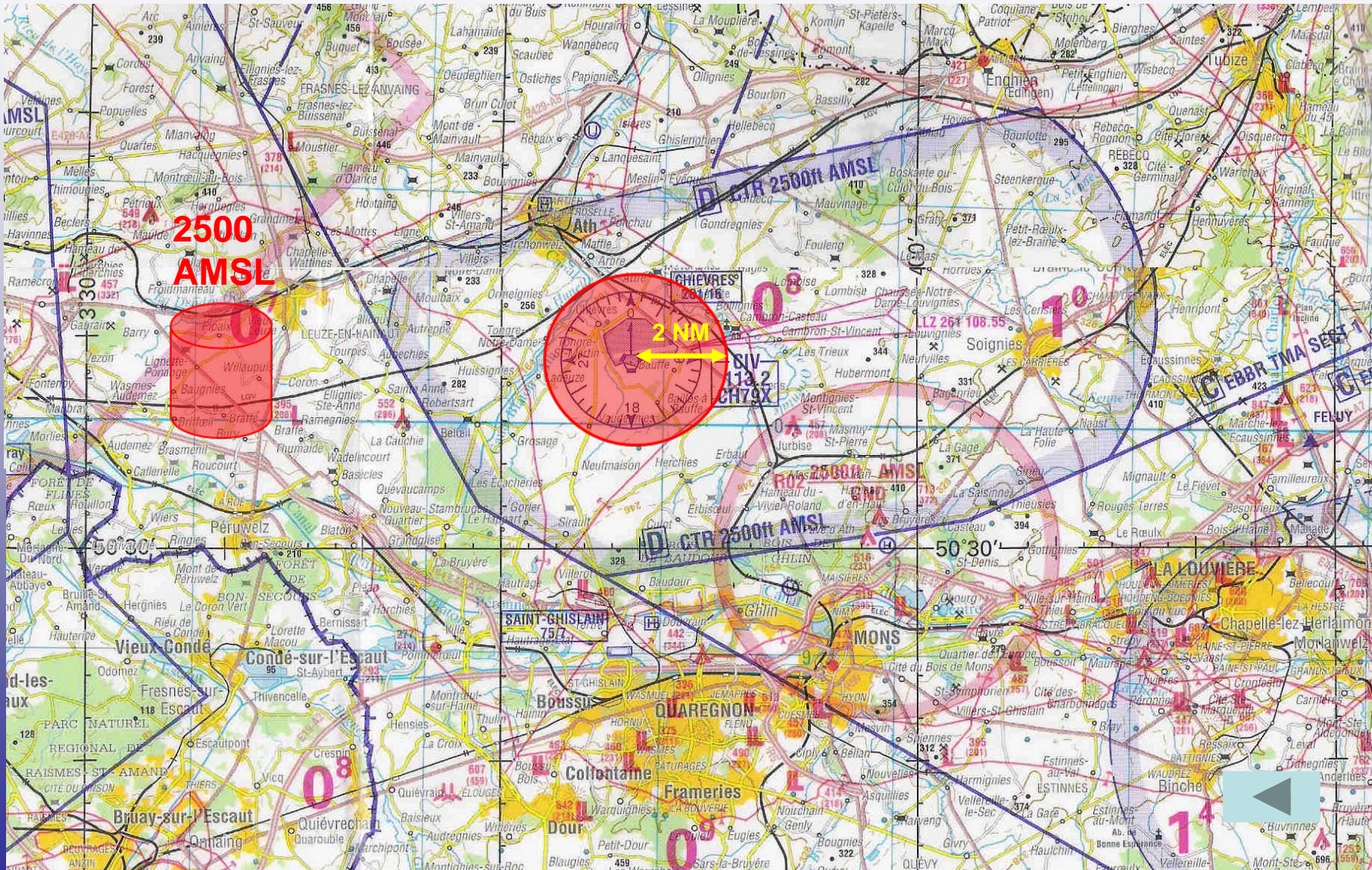
EBBE

2500
AMSL



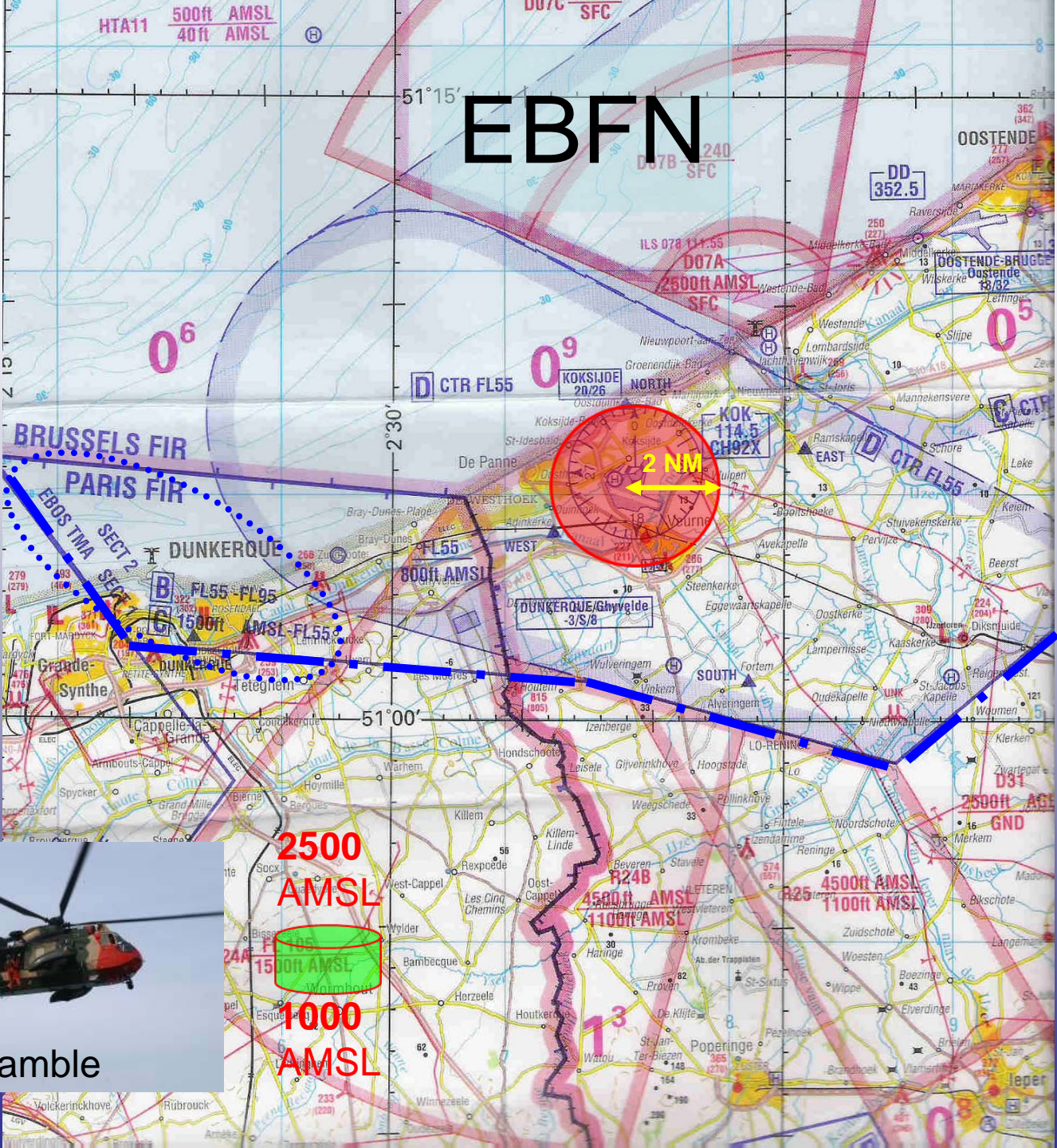
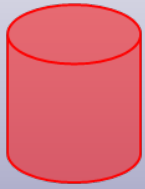
2 NM

EBCV



EBFN

2500
AMSL



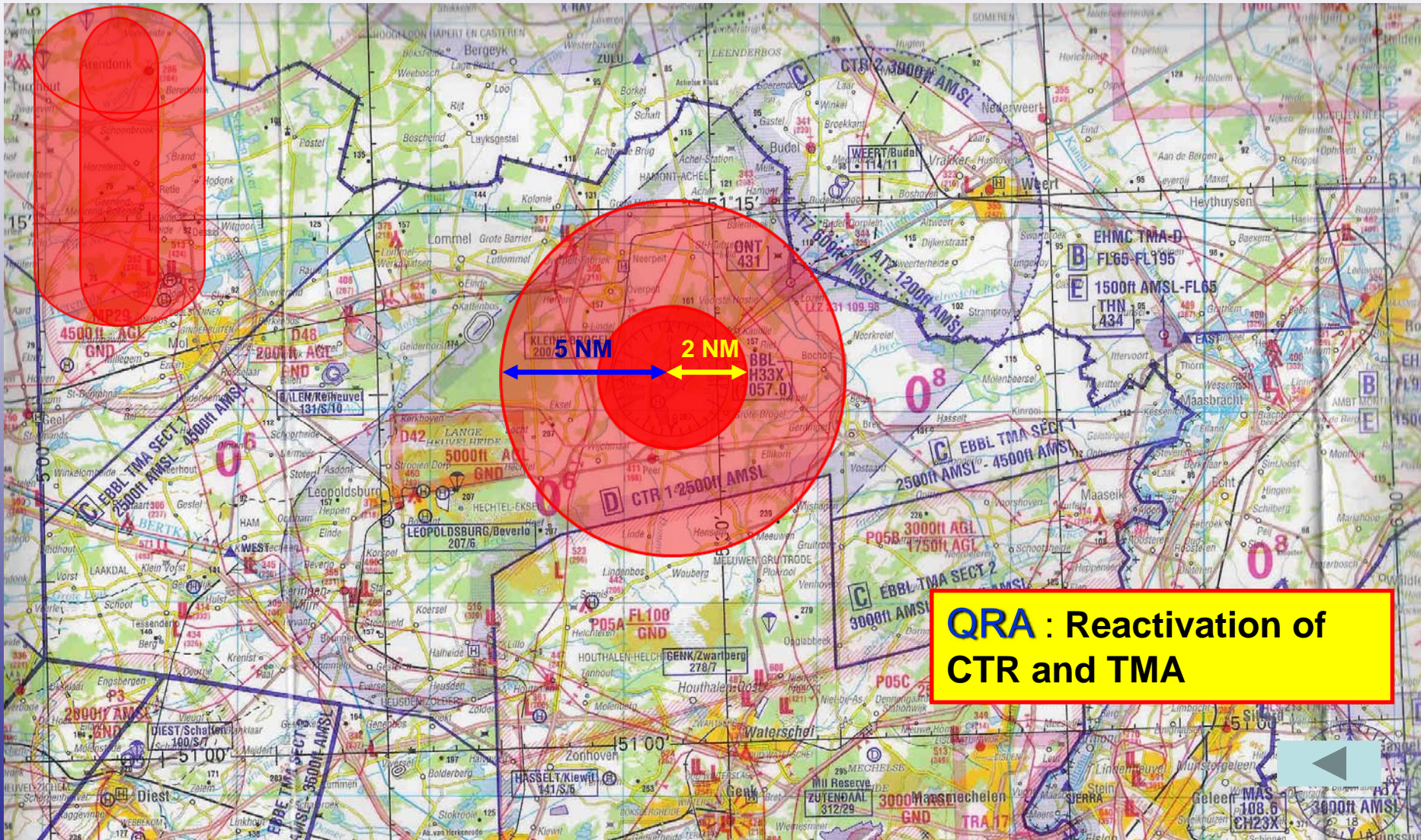
Scramble

2500
AMSL
1500
AMSL
1000
AMSL



EBBL

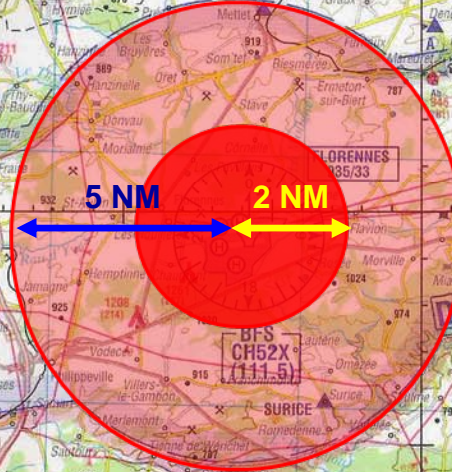
FL 075



QRA : Reactivation of CTR and TMA

EBFS

FL 095



QRA : Reactivation of CTR and TMA

